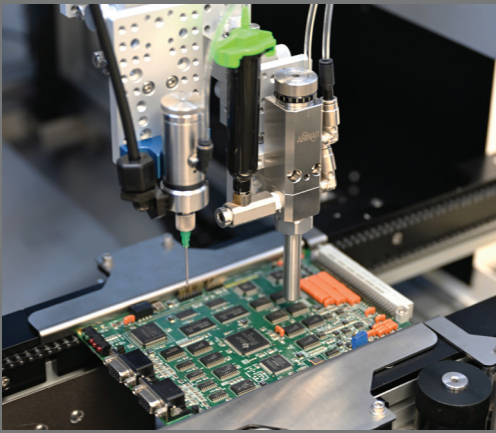




iLX400 Robot Dispensing Work Cell

Precise, Repeatable, Versatile Dispensing



Accuracy Across Complex Applications

Maintain tight tolerances across demanding fluid dispensing tasks such as micro-lines, gaskets, dots, arcs, and more. The ball screw gantry achieves ± 0.01 mm repeatability, while optional tilt-and-turn tooling and high-zoom vision expand reach and resolution.

Scalable, High-Volume Dispensing Automation

Dual independent Z-axis dispense heads enable simultaneous multi-material or multi-step applications, reducing cycle times and increasing process flexibility. Optional chain conveyor systems and camera-based fiducial recognition further enhance throughput and accuracy for automated lines.

Streamlined Programming and Operation

Reduce setup time and training with an easy-to-use system. The integrated PC allows operators to create routines offline in minutes with image overlays. The intuitive interface supports automated workflows and single-operator use.

- ± 0.01 mm axis repeatability
- Servo-driven ball screw gantry
- CCD vision system with optional high-zoom camera
- Tilt-and-turn tool option for hard-to-reach areas
- Tip alignment & cleaning station improves consistency
- Optional conveyor for automated production



Applications

- **Conformal Coating:** Protect from moisture and contaminants
- **Micro-Dots & Lines:** Precision dispensing for fine features
- **Bonding & Sealing:** Repeatable adhesive application
- **Dam & Fill:** Multi-step routines for component protection
- **Underfill:** Reinforce components for reliable connections
- **Form-In-Place Gaskets:** Custom sealing profiles for enclosures
- **Potting & Encapsulation:** Shield electronics from harsh environments

Specifications

Working Area X/Y/Z	400 x 400 x 100 mm (16 x 16 x 4")
Max Speed	X & Y: 500mm/sec Z: 250mm/sec
Work Load	Up to 10 kg (22lbs)
Tool Load	2 kg (4.4 lb)
Repeatability	+/- 0.01 mm
Drive System	Ball screw servo drive
I/O Signals	8 Inputs / 8 Outputs
External Interface	USB / SMEMA
Power Supply	240 VAC, 200 W
Dimensions (W/D/H)	838 x 1092 x 1600 mm / (33 x 43 x 63")
Weight	Up to 365 kg (805 lb)
Approvals	CE, RoHS, WEEE

Models

Model Name	iLX400	iLX400C	iLX400R	iLX400RC
In-line Conveyor	No	Yes	No	Yes
Tilt & Turn Head	No	No	Yes	Yes

Contact Us

USA
info@fisnar.com • 1 (262) 253-8600

Europe
infoeurope@fisnar.com • +44 (0) 1355 577222

Asia
info@fisnar.com.hk • +852 2389-2827

India
info@fisnar.in • +91-11-4556-6223-5

