

F6000N ADVANCE Series Gantry Robots

The F6000N gantry-cartesian robotic systems can be easily integrated with in-line industrial automation.

Gantry industrial robots have all their axes above the work area making them ideal for large dispensing applications.

The modular connectivity design allows Fisnar CCD vision system, tip alignment, and height detect kits to be easily incorporated onto the robot for increased productivity and performance.

Programming and control can be carried out via teach pendant, RS232, or proprietary PC software.



Features

- Work area up to 800 x 1,200 mm
- Axis repeatability +/- 0.05 mm
- 20 kg Z-Axis payload
- Z-Axis motor brake mechanism
- Dual linear guide & ball screw mechanism
- Stepper motor drive system, with closed loop encoder feedback
- Modular connectivity interface
- 150 mm standoffs included for easy robot installation

Benefits

- Open access design for easy integration into conveyor-fed/inline automation lines
- Automating dispense applications on oversize and heavy components is possible due to unlimited workload
- Optional CCD camera vision system can be easily installed for simplified programming & more precise dispense results
- Heavy duty rigid frame structure for use in industrious environments

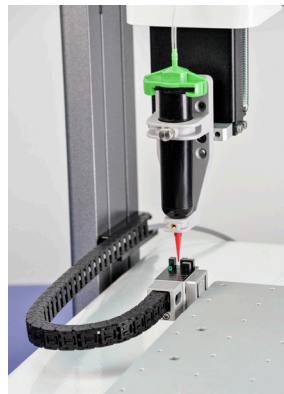
Optional Productivity Accessories

Mechanical Tip Alignment



Item No. TA360U-KIT

Automatic Tip Alignment



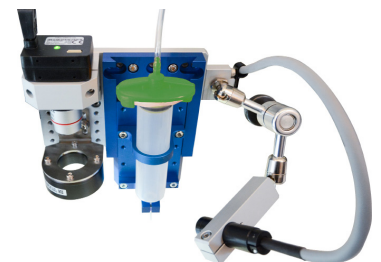
Item No. F6000AKIT-TA3

Height Sensor



Item No. F6000AKIT-HDS

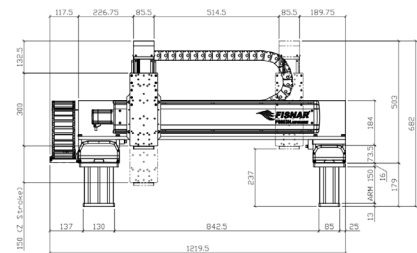
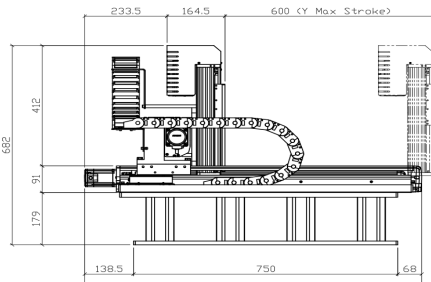
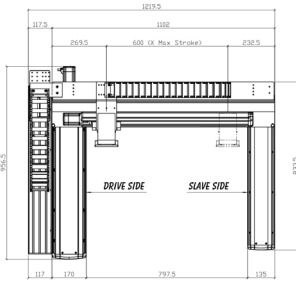
CCD Camera Vision System



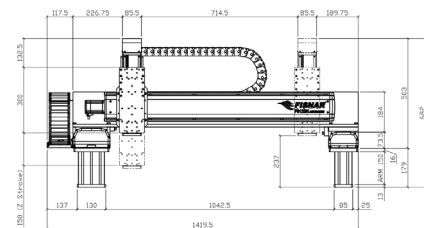
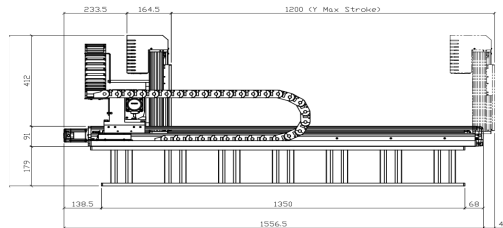
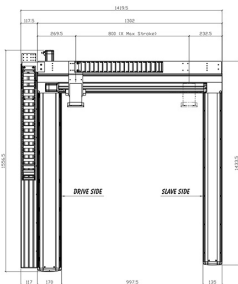
Item No. F6000AKIT-VISION

F6000N ADVANCE Series Gantry Robots

F6603N ADVANCE



F6123N ADVANCE



Specifications

Item Number	F6603N ADVANCE-110 F6603N ADVANCE-220	F6123N ADVANCE-110 F6123N ADVANCE-220
Working Area X/Y/Z	600 x 600 x 150 mm	800 x 1200 x 150 mm
Max Speed (X&Y/Z)	800 / 320 mm / secs	800 / 320 mm / secs
Tool Load (Z-Axis)	20 kg (44 lbs)	20 kg (44 lbs)
Repeatability	+/- 0.05 mm	+/- 0.05 mm
Drive Mechanism	Dual linear guide / ball screw	Dual linear guide / ball screw
Drive System (X&Y Axis)	Closed loop stepper motor	Closed loop stepper motor
Drive System (Z-Axis)	Closed loop stepper motor with brake	Closed loop stepper motor with brake
Data Memory	1 - 100 programs 50,000 points / program	1 - 100 programs 50,000 points / program
I/O Signals	8 inputs / 8 outputs	8 inputs / 8 outputs
External Interface	USB / RS232	USB / RS232
Power Supply	100-115 VAC (F6603N-110) 200-230 VAC (F6603N-220)	100-115 VAC (F6123N-110) 200-230 VAC (F6123N-220)
Dimensions (W/D/H)	1,220 x 1,184 x 632 mm (48 x 46.6 x 24.9")	1,420 x 1,784 x 632 mm (55.9 x 70.2 x 24.9")
Weight	122 kg (269 lb)	142 kg (313 lb)
Approvals	CE, RoHS, WEE	CE, RoHS, WEE

Contact Us

USA
info@fisnar.com
 1 (262) 253-8600

Europe
infoeurope@fisnar.com
 +44 (0) 1355 577222

Asia
info@fisnar.com.hk
 +852 2389-2827

India
info@fisnar.in
 +91-11-4556-6223-5