

VC1195N Valve Controller

OPERATING MANUAL

The VC1195N is a 4-way valve controller that can be used to control one or two valves simultaneously. The controller is suitable for all valves in the brochure identified as requiring or optionally accepting a 4-way controller.

The VC1195N valve controller provides a continuous “valve-off” state and remains in this mode until a signal is received to switch to “valve-on” mode. This instruction can derive from a remote robotic device or by the foot switch provided. When the timer is off, the valve will remain in “valve-on” state as long as the foot switch is pressed or to allow a robot to control the operation. When the timer is selected, a momentary pulse will activate the timer to open the valve for a programmed period and then close the valve automatically.



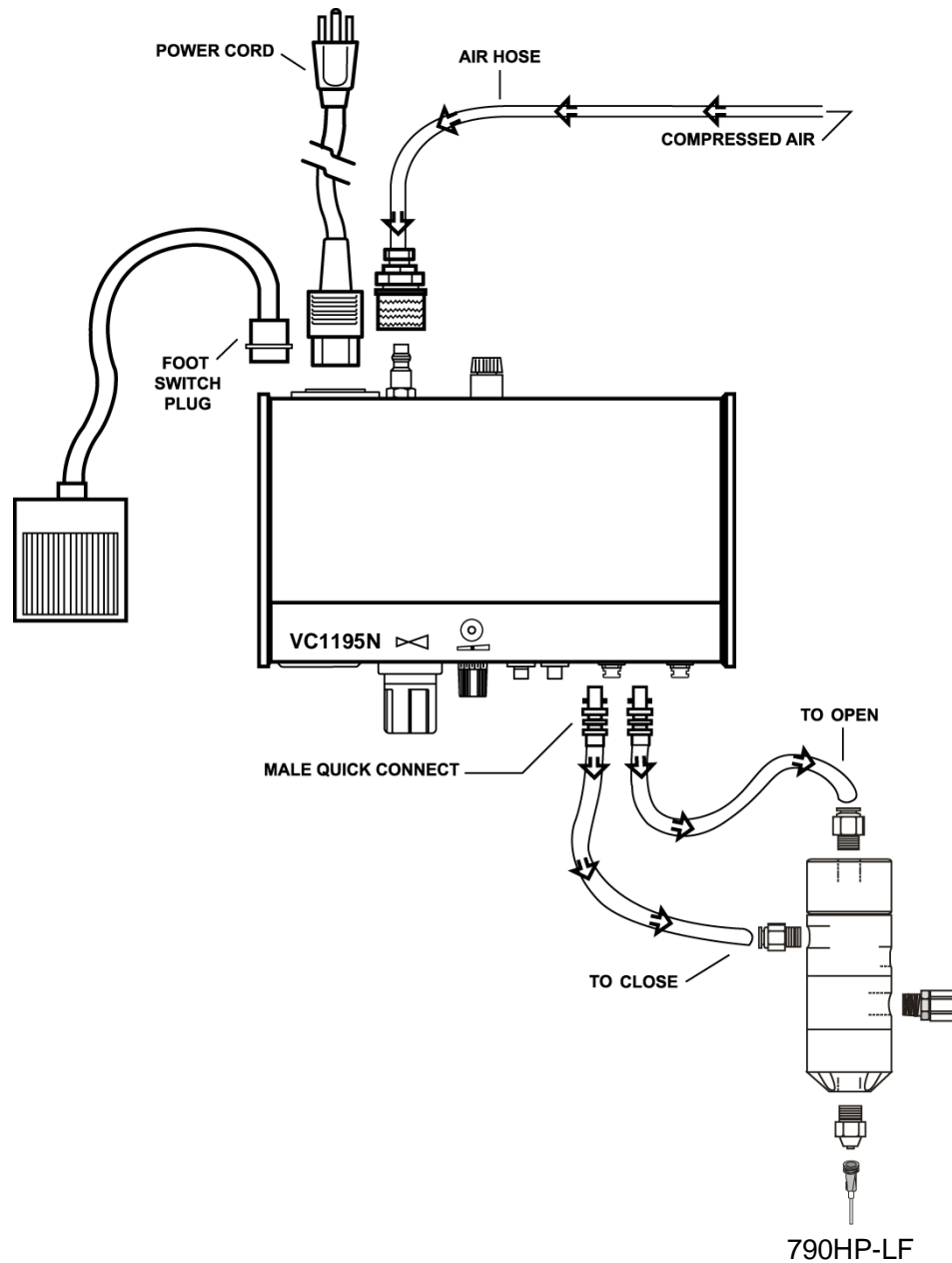
Standard Accessories

Qty	Description	Re-order P/N	Re-order Qty/Pkg
1	Power cord – 110V	560033-LF	1
1	Power cord – 220V	560033E-LF	1
1	Power cord – 220V	560033E-PLUG-LF	1
1	Air Input Line	560752	1
1	Foot Pedal	560027D	1
4	Hose Assembly 6ft.	560524	1

Specifications

• Size:	10.5" x 8.25" x 2.75" (26.67 x 20.95 x 6.98cm)
• Weight:	4 lbs. 3oz. (1.9 kg)
• Input Voltage:	90-260 VAC
• Dispense Time:	0.01 - 31 seconds
• Internal Voltage:	24 VDC
• Cycle Initiation:	Maintained or Momentary
• Cycle Speed:	600+ /Minute
• Air Input:	70-100psi (5-7 bar)
• Air Output:	1-100psi (0.1-7 bar)
• Standards:	European CE approved unit

AIR & ELECTRICAL SET UP DIAGRAM



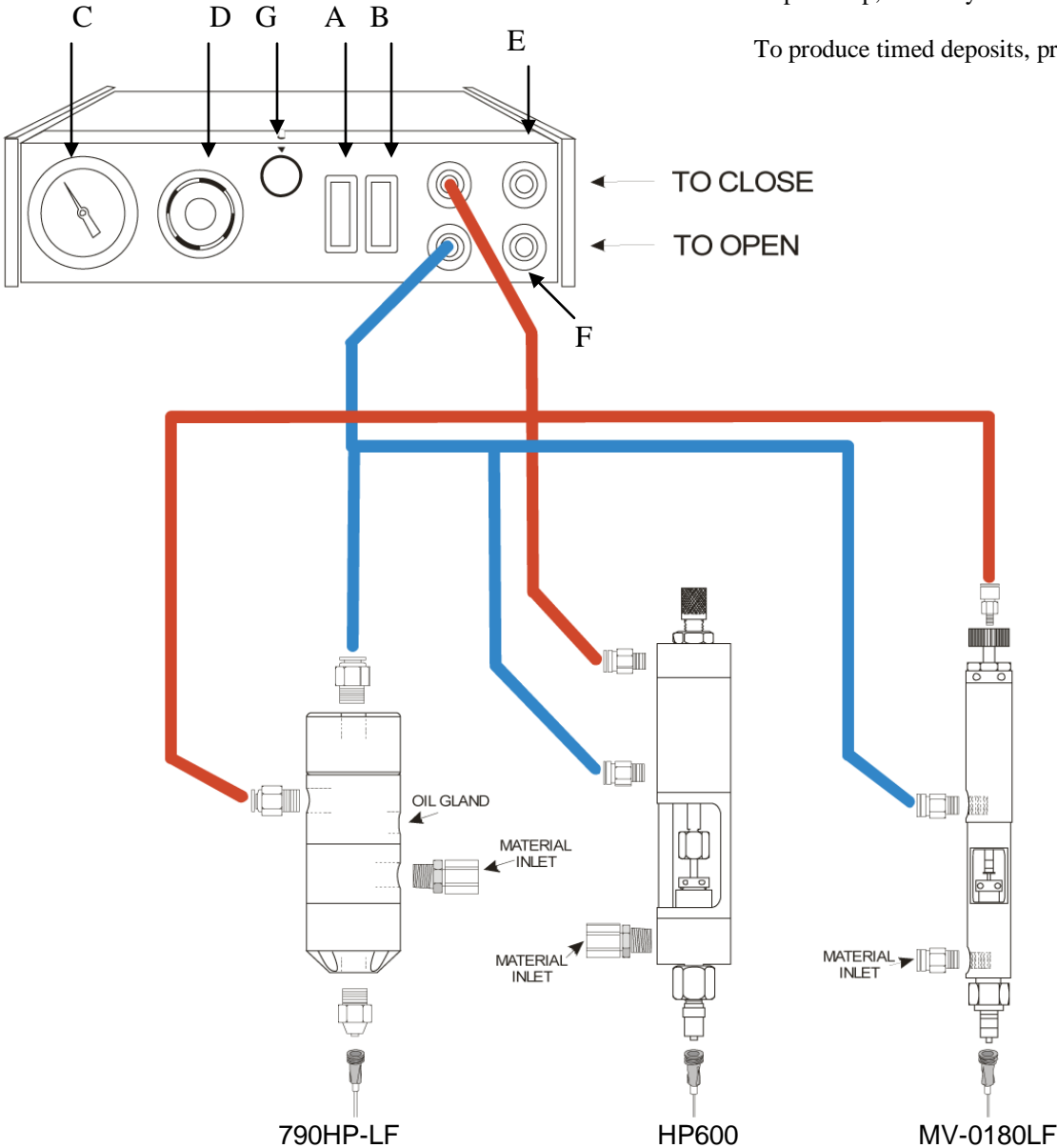
1. Connect air hose to filtered compressed air 70 - 100 psi (5-7 bar) and connect coupling to dispenser.
2. Insert Foot Switch Plug.
3. Insert and twist the 2 male quick connectors into the dispenser.
4. Insert power cord female plug into dispenser and insert the male plug into a grounded outlet - CHECK VOLTAGE LABEL on back of unit.

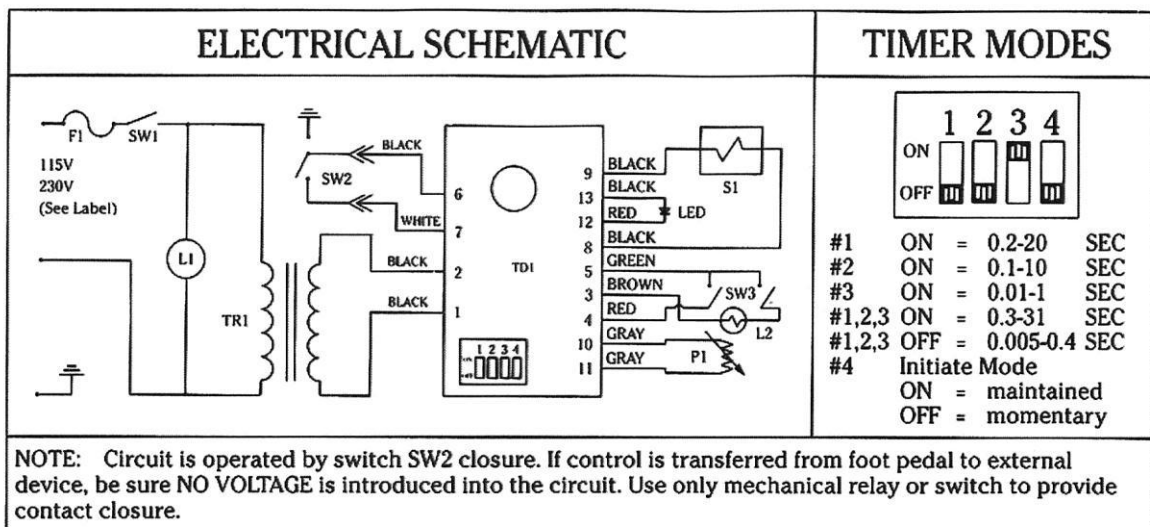
UNDERSTANDING THE FUNCTIONS OF YOUR DISPENSER DISPLAY

- A** Turn unit on.
- B** Turn amber light on – this will provide continuous flow of material as long as the foot pedal is depressed.
- C** Turning the pressure adjust knob (**D**) allows for adjustments of air pressure.
- E** The top quick connect will close the valve.
- F** The lower quick connect will open the valve.

The amount of liquid dispensed depends on air pressure, size of dispense tip, viscosity of material and time of pulse (**G**).

To produce timed deposits, press (**B**) to turn off amber light.





F1	FUSE 115/230 VAC	560025LF	S1	SOLENOID	561095-LF
SW1	POWER SWITCH 115V	560026-Z	TD1	TIMER BOARD	560030-LF
SW1	POWER SWITCH 230V	560026E-Z	P1	TIMER POTENTIOMETER	560031-LF
SW2	FOOT PEDAL SWITCH	560027D	TR1	TRANSFORMER 115V-24V	560032-RSM
SW3	STEADY SWITCH	560028-Z	TR1	TRANSFORMER 230V-24V	560032E-RSM
			LED	DISPENSE INDICATOR	560108-LF

LIMITED WARRANTY

Manufacturer warrants this product to the original purchaser for a period of two (2) years from the date of purchase to be free from defects in material and workmanship, but not against damages caused by misuse, negligence, accident, faulty installation, abrasion, corrosion or by not operating in accordance with factory recommendations and instructions. Manufacturer will repair or replace (at factory's option), free of charge, any component of the equipment thus found to be defective, upon prepaid return of the equipment to the factory during the warranty period of the equipment. In no event shall any liability or obligation of Manufacturer arising from this warranty exceed the purchase price of the equipment. This warranty is valid only when 5 micron filtered air is used. The manufacturer's written liability, as stated herein, cannot be altered or enlarged except by a written statement signed by an officer of the company. In no event shall manufacturer be liable for consequential or incidental damages. A return authorization is required from I&J FISNAR INC. prior to shipping a defective unit to the factory.

Manufacturer reserves the right to make engineering or product modifications without notice.



15 Corporate Drive, Suite E - Wayne - NJ 07470
Tel: (973) 646-5044 E-mail: info@fisnar.com
www.fisnar.com

©2013 FISNAR INC.