

CV629
CARTRIDGE VALVE

***OPERATING
MANUAL***





I&J FISNAR INC.

2-07 Banta Place, Fair Lawn, NJ 07410-3002 USA
TEL. (201)796 - 1477 FAX. (201)794 - 7034
info@ijfnar.com http://www.ijfnar.com

© I&J FISNAR INC. 2004

GENERAL DESCRIPTION

The CV629 is a pneumatically operated valve designed for precision dispensing of all types of fluids, such as solvents, oils, silicones, glues, UV adhesives, inks, etc. CV629 is designed for use with a valve controller and reservoir tank.

Shot sizes may be fine tuned by turning the adjustment screw at the top of the valve; hence the CV629 valve is recommended for applications where micro deposits are required. Shot size and flow rate are controlled by the tip size, fluid pressure and the duration that the valve is open

SPECIFICATIONS

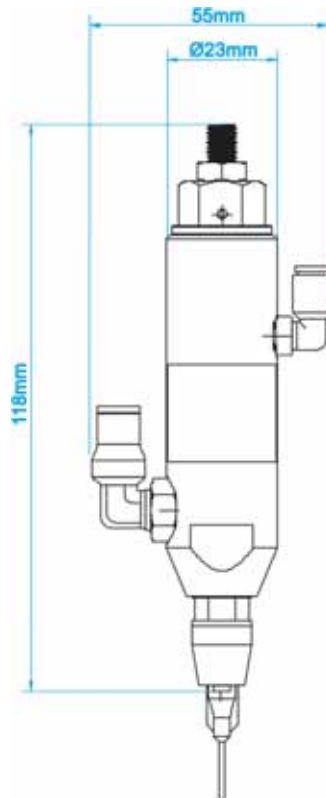
Weight	:	4.8oz (135 gm)
Air pressure	:	70 to 85 psi (5 to 6 bar)
Maximum fluid pressure	:	300 psi (21 bar)
Air inlet	:	M5 thread w/ push-in fitting for 6mm OD tube
Material inlet	:	1/8 BSPP w/ push-in fitting for 6mm OD tube
Material outlet	:	Luer lock adapter

OPERATING INSTRUCTIONS

Apply a minimum of 70 psi (5 bar) air pressure to the air inlet to open the valve. Use a 5 micron air filter to supply clean and dry air to the valve. The valve is designed to be opened by air pressure and closed by a return spring when air pressure is released.

Fluid is supplied to the material inlet through a 1/8 BSPP port and is dispensed from the material outlet (through a luer lock adapter).

Shot size may be fine tuned by turning the adjustment screw at the top of the valve.



CLEANING

It is recommended to clean the valve after using it, especially when the valve is used to dispense natural hardening type of materials. Clean the valve by continuously dispensing a liquefied detergent before such material hardens.

When disassembling the valve for cleaning, unscrew the end cup and the luer lock adapter and then extract all the components and clean them with an appropriate product.



I&J FISNAR INC.

2-07 Banta Place, Fair Lawn, NJ 07410-3002 USA
 TEL. (201)796 - 1477 FAX. (201)794 - 7034
 info@ijfisnar.com http://www.ijfisnar.com

TECHNICAL
 SERVICE
 INFORMATION

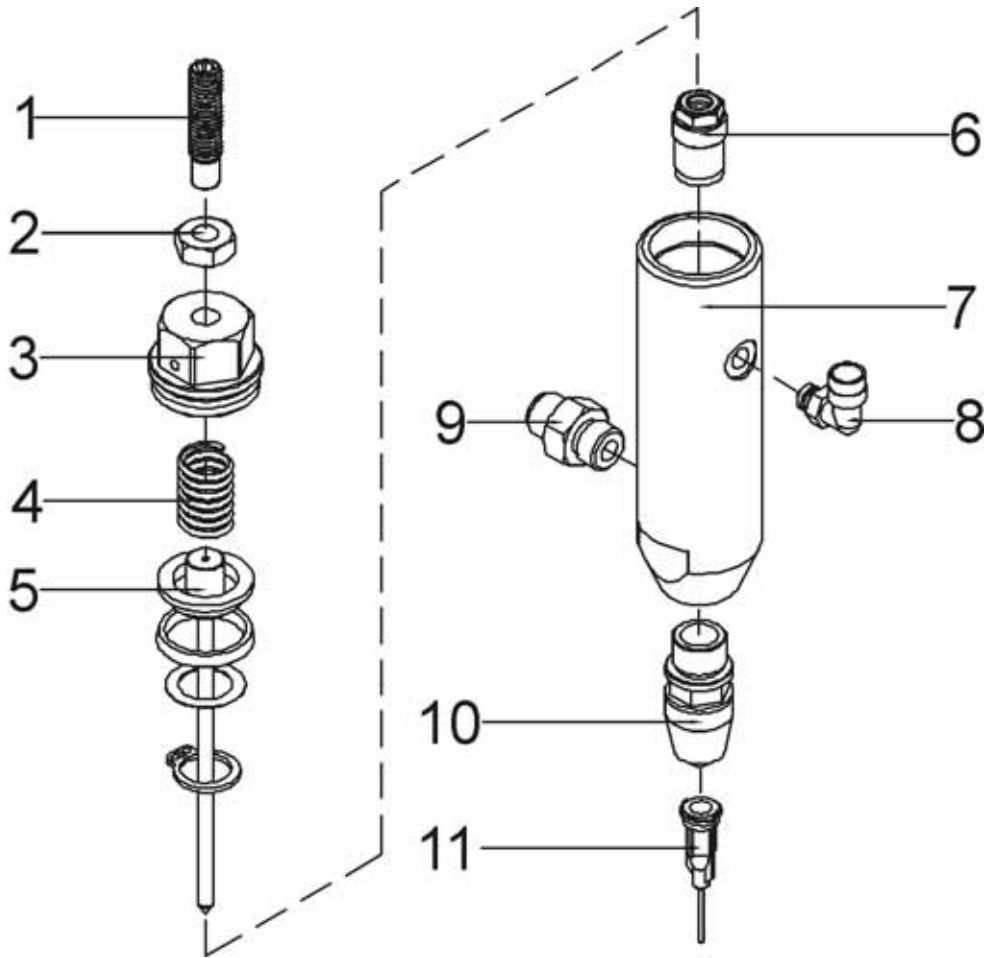
SHEET 1 OF 1

REVISION

A	AUG 11, 2004
B	OCT 26, 2004

PRODUCT
 DESCRIPTION

CV629 CARTRIDGE VALVE



NO.	PART NUMBER	DESCRIPTION	QTY.	NO.	PART NUMBER	DESCRIPTION	QTY.
				13*	562110	OPERATING AIR LINE ASSY.	1
6	562075	CARTRIDGE WITH SEAL	1	12*	562109	MATERIAL SUPPLY LINE ASSY.	1
5	562074	NEEDLE WITH SEAL	1	11		LUER LOCK TIP	1
4	562073	STANDARD SPRING	1	10	562079	LUER LOCK ADAPTER	1
3	562072	END CUP	1	9	562078	MATERIAL FITTING	1
2	562071	NUT	1	8	562077	AIR FITTING	1
1	562070	ADJUSTMENT SCREW	1	7	562076	VALVE BODY	1

* NOT SHOWN

DRAWN BY: D. KITANSKI

DATE DRAWN: 8/11/04

FILE NAME: \CV629